



i-TECH **CORPORATION** Elevator Parts Manufacturers & Traders



Timely Delivery



Performance



Maintenance



Quality Assurance

Company Profile

Company Profile



The Company was Established in 1994 by Shri TRIBHOVANDAS PATEL who begin a quality-driven, techno-corporate mission and started manufacturing of all types of elevators spare parts . HI-TECH CORPORATION had more than 25 years of experience in the field of elevators manufacturing. MR.PRAVIN T. PATEL is working as the Managing Director of the company joining the mission of quality production.

HI-TECH CORPORATION is one of the leading manufacturer of elevator spares and providing quality products to the clients. As a responsible and trusted organization, our commitment and responsibilities play a very important role in our business. In nearly two decades of our presence in the elevator world, we have successfully handled various challenging projects across with our high performance equipments.

For us, customer satisfaction is the key to our growth. Their feedback invariably serves as the most potential support for continuous improvement in our people, products and processes.

OUR VISION

Deliver delight. Something you tend to experience with us because of many things. Our commercial and production 'heart' at Ahmedabad in Gujarat, the business capital of India. Our robust 'backbone' of components suppliers and vendors, known for their ability to deliver on specifications, quality and time. Our well-developed 'muscle' of dealers, selected for their established market strengths. And our skilled 'hands,' our sales and technical guys.

QUALITY

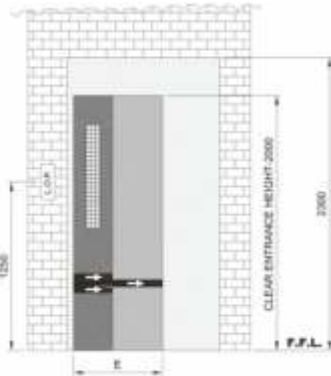
HI-TECH CORPORATION has always believed that the one irrefutable argument in favour of a company or brand is: Quality. It eventually wins over everything.

In pursuit of this belief, the company has in place a vast regimen of Total Quality Management Initiatives, which includes the following paradigms and practices:

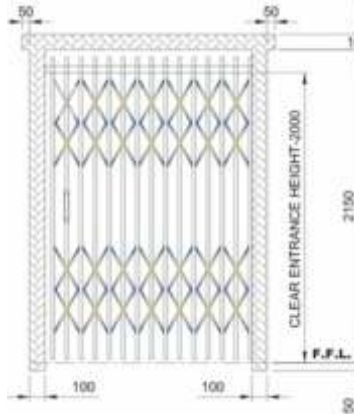
Manual Doors



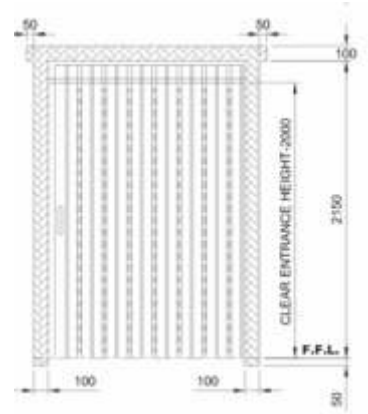
Manual Telescopic (2 Fold) Door



Collapsible Door (M.S. & S.S)



Imperforated Door



Space Requirement For Manual Door Operation Passenger Elevators

LOAD		PLATFORM EDGES		LIFT-WELL IS SIDE FINISHED		ENTRANCE WIDTH	DOOR TYPE	MACHINE ROOM		SPEED MPS	PIT DEPTH	OVER HEAD
PER SONS	KG	A	B	C	D	E		K	L			
5	340	1250	950	1600	1200	760	Collapsible / Swing / Imperforate	300+C+300	600+C+1500	UPTO 0.68	1600	4900
6	408	1300	1000	1700	1300	800		300+C+300	600+C+1500			
8	544	1500	1200	1900	1500	800		300+C+300	600+C+1500			
13	884	1900	1500	2400	1850	900		600+C+600	300+C+1500			

Auto Door



Space Requirements For Automatic Variable Speed Collective Passenger Elevators

LOAD		PLATFORM EDGES		LIFT-WELL IS SIDE FINISHED		ENTRANCE WIDTH	DOOR TYPE	MACHINE ROOM		SPEED MPS	PIT DEPTH	OVER HEAD
PER SONS	KG	A	B	C	D	E		K	L			
6	408	1300	1100	1600	1400	700	Auto Center opening	300+C+300	600+C+1500	UPTO 1.0	1600	4900
8	544	1500	1300	1800	1800	800		300+C+300	600+C+1500			
10	680	1650	1400	2000	2000	800		600+C+600	600+C+1500			
13	884	1900	1500	2000	2000	900		600+C+600	600+C+1500			

Cabin

Cabin



MS Powder Coated Cabin



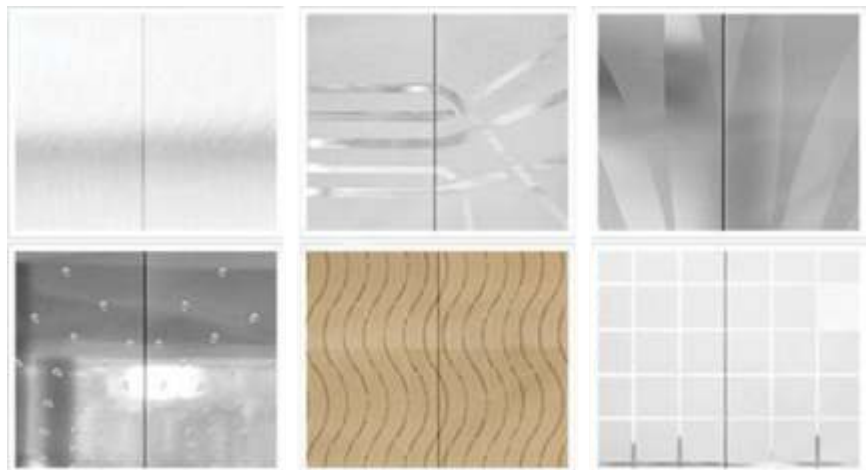
SS Hairline Cabin



SS Mirror finish Cabin



SS Golden Cabin



Cabin Sheets

Capsule Type Cabin

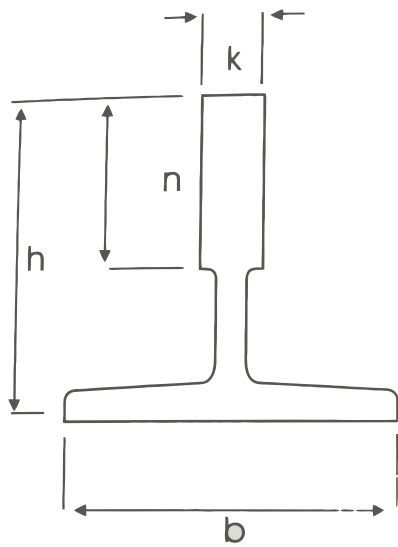


Guide Rail

Guide Rail

Features:

- Length 5 mtr / 16.5 feet
- Straight, accurate dimensions
- Male-female guide rails.



Machined Guide Rail

Code	Base	Height	Thickness	Machined
	b	h	k	n
T70	70	65	9	34
T78	78	56	10	26
T89	89	62	16	33.5
T50	50	50	6	-

Guide Rail Components



Guide Shoe



Fish Plates



Guide Clip

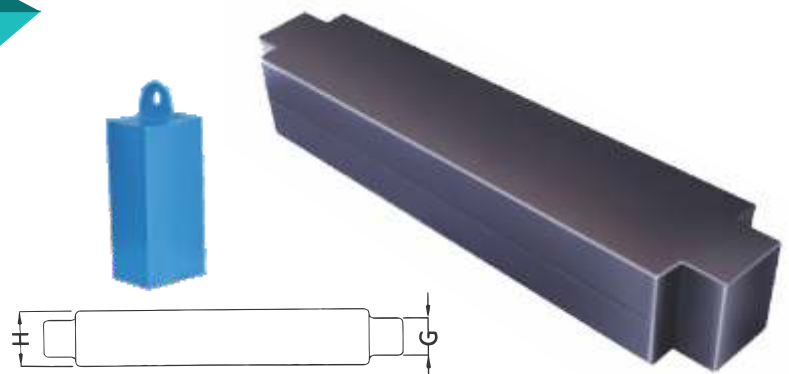
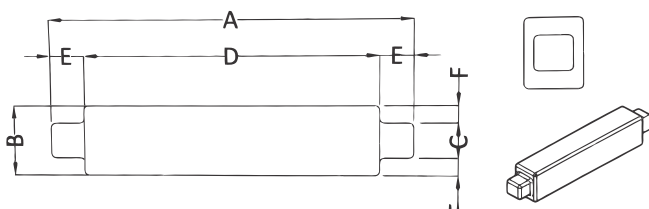


Oiler



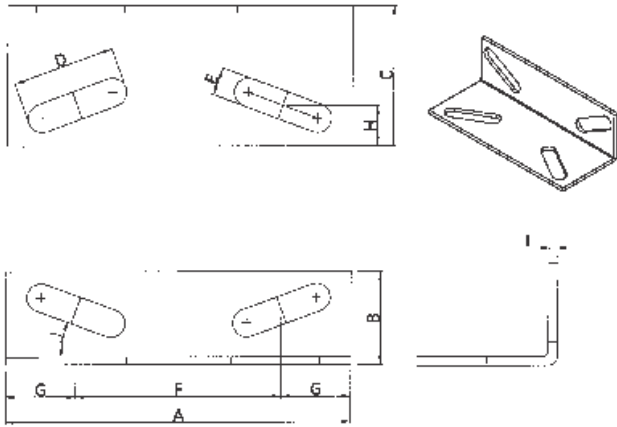
Safety Block

Counter Weight



GP Bracket

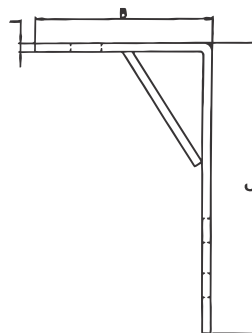
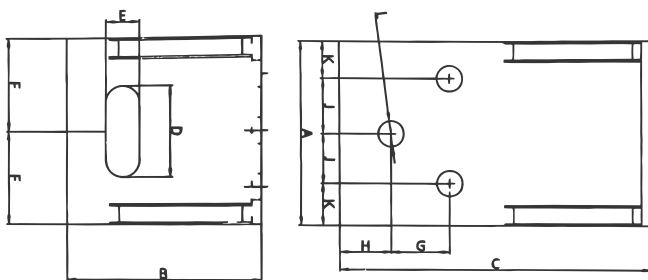
GP Bracket



CAR GP TOP BRACKET

SIZE	A	B	C	D	E	F	G	H	I	J
ALLOWABLE TOLERANCE	±2.5 MM	-3MM	-3MM	-2.5 MM	+0.5 MM	±2.5 MM	±2.5 MM	±2MM	±0.5 MM	±2°
50-100	185	50	70	55	14	110	37.5	22	5.5	20°
100-150	185	50	110	55	14	110	37.5	22	5.5	20°
150-200	185	50	145	55	14	110	37.5	22	5.5	20°
200-250	185	50	195	55	14	110	37.5	22	5.5	20°

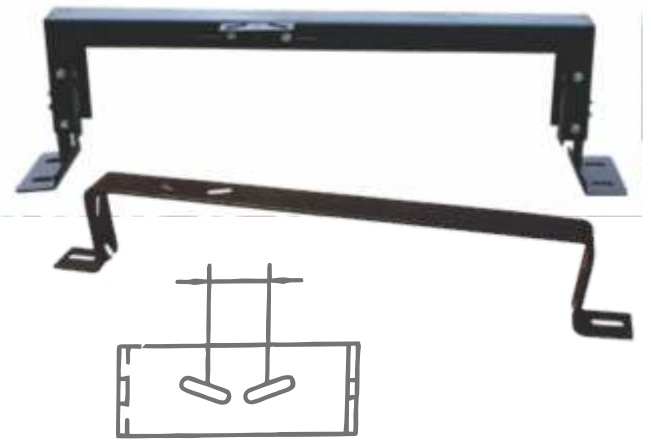
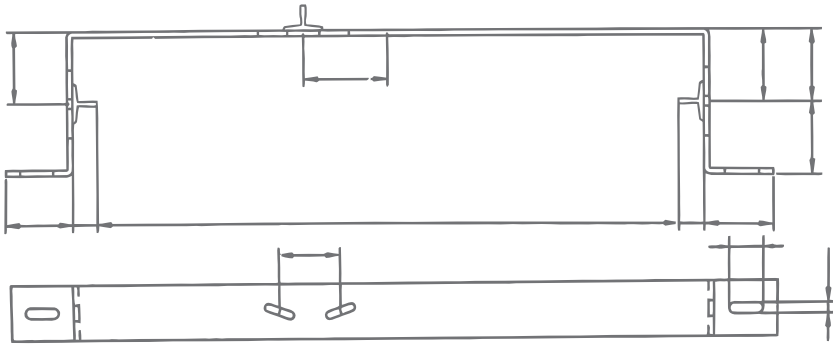
Counter Brackets



COUNTER GP BOTTOM BRACKET

SIZE	A	B	C	D	E	F	G	H	I	J	K	L
ALLOWABLE TOLERANCE	±2.5 MM	±2.5 MM	±2.5 MM	±2.5 MM	±2.5 MM	±2.5 MM	±1.5MM	±1.5MM	±0.5MM	±2.5 MM	±2.5 MM	±2.5 MM
100-150	100	103	170	50	19	50	32	28	6	30	20	Ø14
150-200	100	103	215	50	19	50	32	28	6	30	20	Ø14
200-250	100	103	265	50	19	50	32	28	6	30	20	Ø14
250-300	100	103	315	50	19	50	32	28	6	30	20	Ø14

Combination Bracket



Car Frames



Car Frame



Carframe

Machines



Geared Machine



Gearless Machine

Other Products



Buffer Spring



Bulldog Clip



COP-LOP



Diverter Sheave



E&U Packing



Junction Box



Limit Switch



O.S.G.



R Cam



Thimbles



hi-TECH **CORPORATION**

Elevator Parts Manufacturers & Traders



Plot No. 134/B, Tribhuvan Industrial Estate,
Near Kathwada-Singrawa Road, GIDC
Kathwada, Ahmedabad - 382430, Gujarat, India.



Mr. Viral Patel +91 76980 22331
Mr. Vraj Patel +91 95745 54695



info@hitechcorp.co.in
pravin9180@gmail.com
viral9896@gmail.com